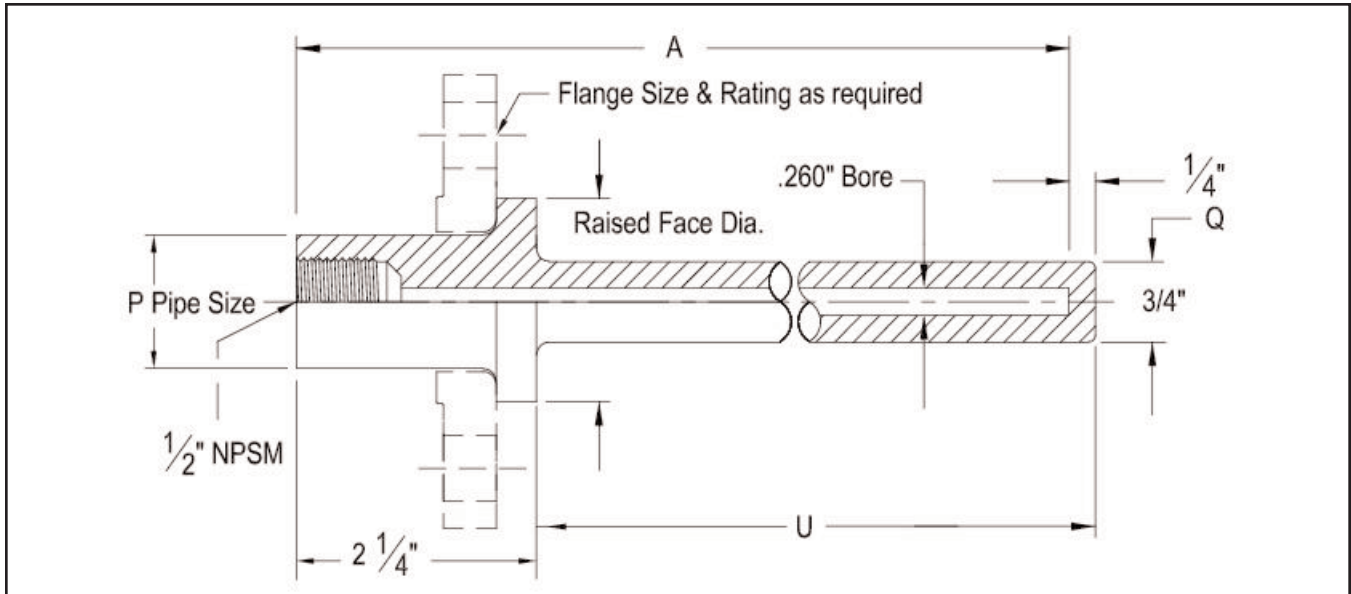
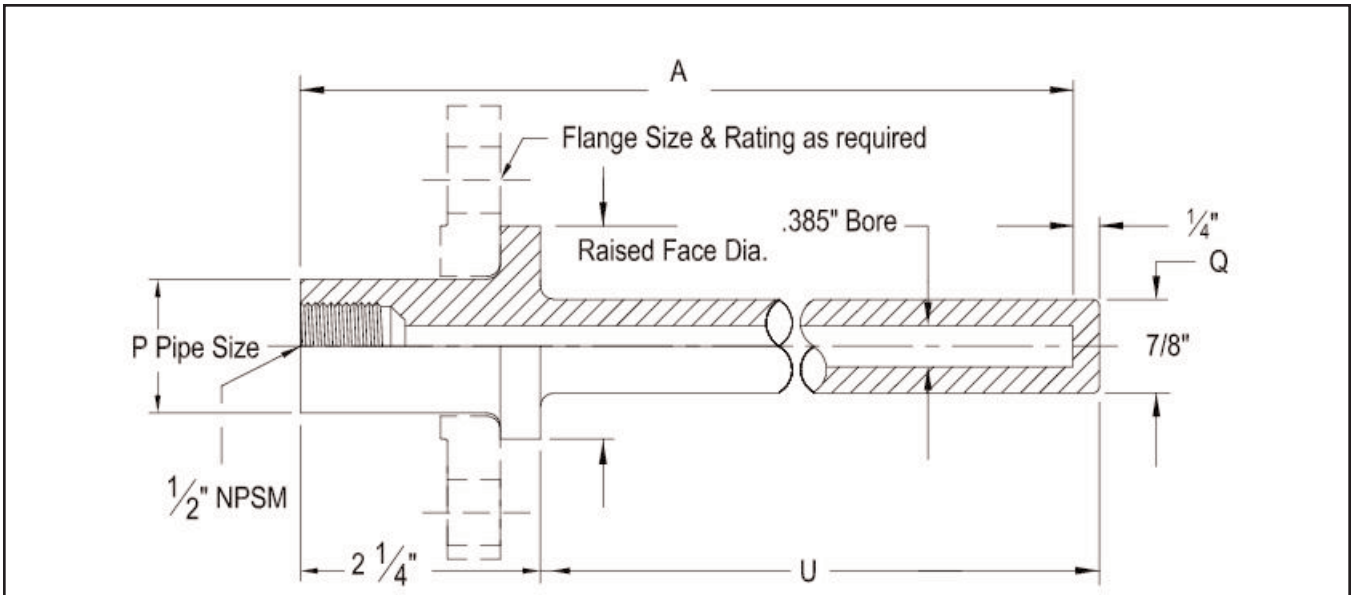


Van Stone Thermowells



Van Stone (V) .260 " Bore (Straight)



Van Stone (V) .385" Bore (Straight)

Process Connection	Pipe Size	Actual Diameter	Raised Face Diameter
1"	1" Lap Joint Flange	1.315"	2.000"
1 1/2"	1 1/2" Lap Joint Flange	1.900"	2.875"
	Model	Bore and Thermowell Type	
	V260	.260" Bore - Standard Duty	
	V385	.385" Bore - Standard Duty	
	Insertion Length	Stem Length "A"	Insertion Length "U"
	U2	4"	2
	U4	6"	4
	U7	9"	7
	U10	12"	10
	U13	15"	13
	U16	18"	16
	U22	24"	22
	Other	Consult Factory	
		Material	Thermowell Material
		316SS	AISI-316 SS - Standard
		304SS	AISI-304 SS
		Brass	Brass
		CS	Carbon Steel
		Monel	Monel 400
		Other	Consult Factory

1" - V260 - U4 - 316SS
- - -

Sample Model Number
Your Model Number